

Office to let

One Herastrau Offices

Bucharest, Sector 1, 30-34 Daniel Danielopolu st.



Building information

| | |
|----------------------|--------------|
| Building status | Existing |
| Year of construction | 2019 |
| Parking ratio | 1 / 150 sq m |
| Total building area | 7 685 sq m |

Commercial terms

| | |
|--------------------|---------------|
| Office space* | after login * |
| Parking | after login * |
| Service charge* | after login * |
| Minimum lease term | after login * |
| Availability | after login * |

* Asking terms for m²/month

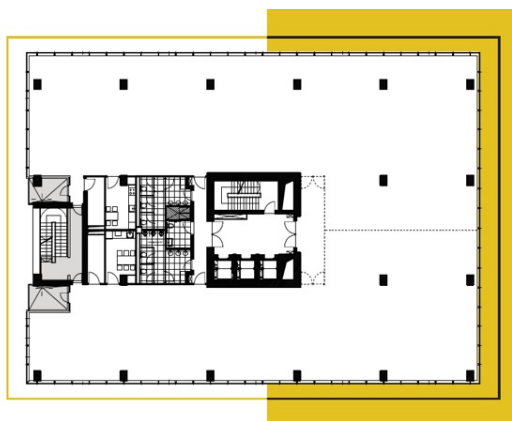
Location



Available space

Building completely leased


Typical floor plan



Public transport

Bus: 112, 301, 330

Contact

 +40 21 302 3400

More information